

Technical Data Sheet
**GLAZING
VISION**

Walk On Flushglaze Rooflight

FG-WO-TDS-v1.9-29.11.2018



Code: 402 Glazing Vision Fixed Walk On Flushglaze Rooflight

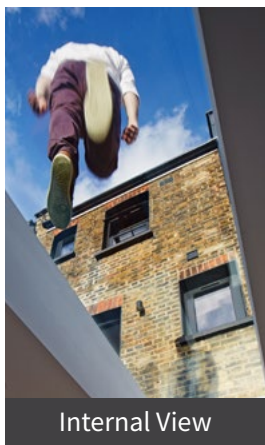
Intended use: Improving natural daylight/walkable glass

Fixed glazing system comprising of Qualicoat approved powder coated aluminium extrusion and insulated double glazed unit.

Designed to be installed 1° from horizontal.

Optional kerb trim cover designed to mask the top of upstands which may be visible through glass when viewed from above, includes detail to recess standard plaster board.

Available in either single 'solo' format or modular arrangements allowing larger expanses of glass to be formed from multiple sections.



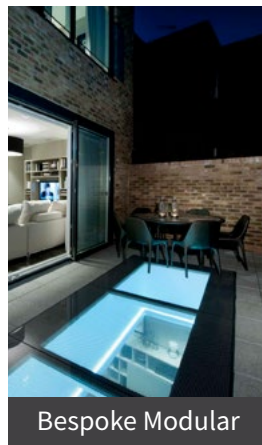
Internal View



External View



Modular Internal



Bespoke Modular

The Walk On Flushglaze rooflight system is available in several variants:

- Solo
- Modular with aluminium back to back angles
- Wall abutment detail - maximum three sides
- Circular
- Bespoke shapes (design fees apply)
- Triple glazed

Circular and bespoke shaped options are available on request and may incur additional design fees.



Technical Data Sheet

GLAZING VISION

Walk On Flushglaze Rooflight

FG-WO-TDS-v1.9-29.11.2018

Typical Flushglaze critical kerb dimensions*

Minimum Height:	150mm	Minimum Thickness:	75mm
Minimum Span:	450mm	Maximum Span:	4200mm
Minimum Width:	400mm	Maximum Width:	4200mm*
Minimum Pitch:	1°	Maximum Pitch:	3°

*Maximum per section for multi part units

Maximum kerb area and rooflight size is dependent on glass specification and other factors. If larger sizes are required we recommend contacting our technical sales team for further guidance.

Kerbs should be constructed in accordance with manufacturers recommendations.

Extruded aluminium framework with a combination of silicone, butyl and rubber seals.

Supplied as standard with Qualicoat approved powder coated finish in RAL7015 Slate Grey.

Other colours from RAL colour chart available on request/dual colour option available on modular arrangements.

Secured to kerb with structural fixings and butyl adhesive.

Typical glass specification

Outer:	25.5mm heat soak tested clear toughened laminated.
Spacer:	14mm warm edge Black silicone sealed argon filled cavity.
Inner:	6mm heat soak tested toughened low e.

Design loadings for this glass specification: 1.5kN/m² Uniform Distributed Load 2.0kN Concentrated Load.

Other glass specifications such as triple glazed and solar control variants are available on request which allow for larger single pane sizes or alternative performance characteristics - contact our technical sales team to discuss your requirements.

Standard drawing references

402-ASS-003	Walk on Flushglaze cross section
402-ASS-008	Walk on Flushglaze with wall abutment
402-ASS-016	Walk on Flushglaze multi-part
402-ASS-048	Walk on Flushglaze EPDM cross section
402-ASS-050	Internal walk on Flushglaze
402-ASS-053	Circular walk on Flushglaze kerb detail
402-ASS-060	Wall abutment detail (Walk-on) for folded-sheet wall-abutments
402-ASS-062	Wall abutment detail - Extra-large profile
402-ASS-063	Typical kerb detail (Walk-on) for oversize units
402-ASS-064	Walk-on Flushglaze with EPDM membrane detail



Technical Data Sheet

GLAZING VISION

Walk On Flushglaze Rooflight

FG-WO-TDS-v1.9-29.11.2018

Secured by Design



LPS 2081: Issue 2
Cert/LPCB ref: 1347a

This product has been attack tested by the Building Research Establishment in Watford to LPS2081 Issue 1:2015 issued by the Loss Prevention Certification Board (LPCB) in order to comply with the Building Regulations approved document Q: security in dwellings.

Further information can be found at redbooklive.com

The unit has also been approved Secured by Design, the official UK Police flagship security initiative working with industry test houses to create and test high level security standards in response to trends in crime.

This scheme is set up to make it easy to recognise individual products prior to purchase and offer peace of mind that those products have been tested to a national standard that is recognised by Building Control.

Powder coated profiles undergo a thorough series of laboratory tests in order to achieve standards set out by Qualicoat, Zurich.

Glazing Vision are an approved Qualicoat Applicator, licence no. 1017, and can thus pass on the full paint warranty from the manufacturers of the powder coat we use which is the Akzo Nobel Interpon D1036 or D2525 range.

Independently performance tested by the British Board of Agrément. The Flushglaze rooflight had to undergo a rigorous testing regime to achieve certification that not only included weather testing but also testing for security, thermal performance, structural integrity and durability of the paint finishes and sealants used.



GLAZINGVISION

Glazing Vision Ltd
Sawmills Road, Diss IP22 4RG

Technical

📞 01379 658300

Email

✉ technicalsales@glazingvision.co.uk