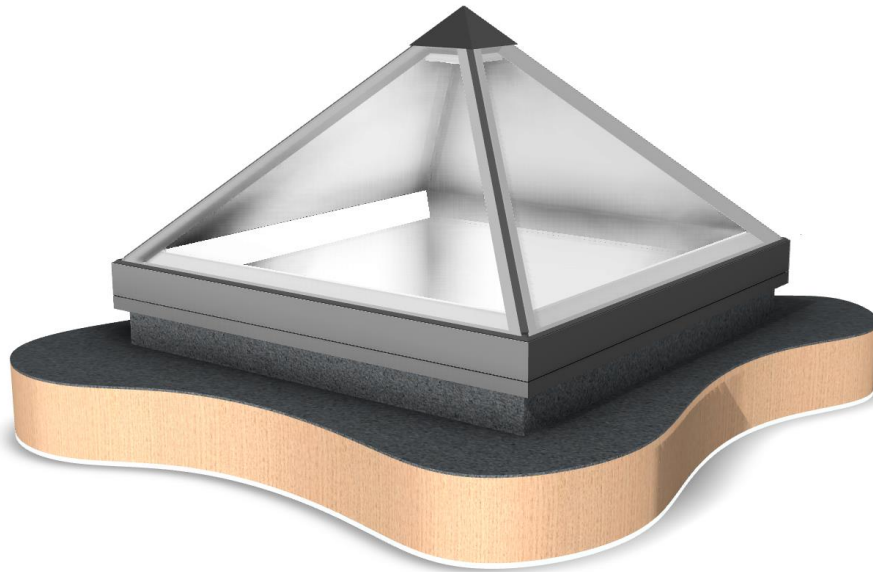


## Product Data Sheet



<b>Name:</b>	GV Standard Pyramid (Fixed)
<b>Code:</b>	404
<b>Type:</b>	Fixed rooflight
<b>Description:</b>	A fixed glazing system comprising powder-coated aluminium extrusion and insulated glazed units. Designed to be installed on a flat roof. The flush glazing system used within the rooflight is designed to provide maximum daylight with minimal visible internal structure.
<b>Product Features:</b>	<p>A choice of square or elongated units. Square units are available with an optional low-voltage down lighter.</p> <p>Thermally-broken aluminium framework providing excellent thermal performance as standard. Powder-coated dual colour as standard.</p> <p>Optional trickle ventilation.</p>
<b>Standard Glass Specification:</b>	<p>Outer: 6mm Clear HST toughened.</p> <p>Spacer: 20mm Black silicone-sealed argon-filled cavity with warm-edge spacer.</p> <p>Inner: 6mm Clear soft low-E HST toughened.</p>
<b>Standard Colour:</b>	RAL 7015 Grey outer – RAL 9010 White inner.
<b>Rooflight Control:</b>	N/A
<b>Power Supply:</b>	Optional for low-voltage down lighter.
<b>Drive Mechanism:</b>	N/A
<b>Thermally Broken:</b>	Yes
<b>Seals:</b>	Combination of silicone and butyl.
<b>Security:</b>	Secured to kerb with structural fixings and butyl adhesive.



**Kerb Dimensions:** Min Height = 150mm  
 Min Structural Thickness = 100mm

**Square Pyramid** Min Span/Width = 600mm Max Span/Width = 1500mm  
 Min Pitch = 0° (recommended) Max Pitch = 10°

**Elongated Pyramid** Min Span = 600mm Max Span = 1500mm  
 Min Width = 650mm Max Width = 2500mm  
 Min Pitch = 0° (recommended) Max Pitch = 10°

**Use for Access:** N/A

<b>Sales Drawings:</b>	<b><u>Drawing Number</u></b>	<b><u>Description</u></b>
	404-ASS-401	Pyramid overview
	404-ASS-402	Pyramid kerb detail
	404-ASS-403	Section through square pyramid
	404-ASS-404	Section through elongated pyramid
	404-ASS-405	Section through pyramid kerb detail
	404-ASS-406	Section through square pyramid triple glaze
	404-ASS-407	Section through elongated pyramid triple glaze
	404-ASS-408	Section through pyramid kerb detail triple glaze

### Optional Extras

<b>Rain Sensor:</b>	N/A	<b>Remote Control:</b>	N/A
<b>Solenoid Bolt:</b>	N/A	<b>Dual Colour:</b>	YES
<b>Thermostat:</b>	N/A	<b>Special Colour:</b>	YES
<b>BMS Integration:</b>	N/A	<b>Ritec Coating:</b>	YES
<b>Trickle Vents:</b>	YES	<b>Down lighter:</b>	YES
<b>Wall Abutted:</b>	NO	<b>Multi-Part</b>	NO
<b>Round:</b>	NO	<b>Multi-Part with Glass Fins</b>	NO

