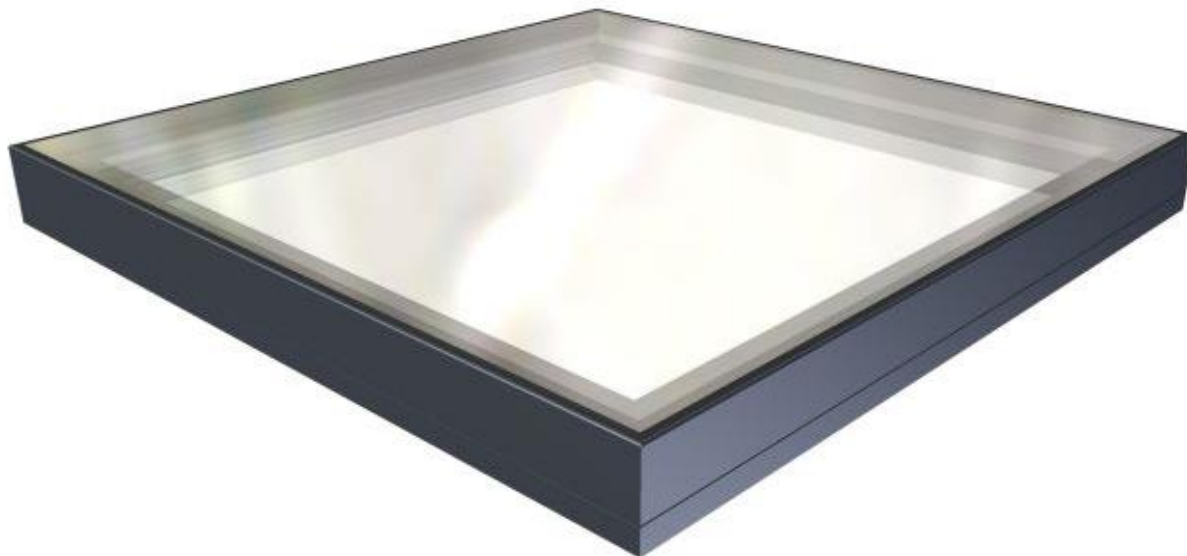


Product Data Sheet Flushglaze Walk-On



Name:	Flushglaze (Walk-On)
Code:	402
Type:	Fixed Rooflight for Walk-On
Description:	<p>A fixed glazing system comprising polyester powder-coated aluminium extrusion and a double glazed walk-on unit. Designed to be installed at 1° from horizontal. Available in either single or multipart format, the latter consisting of multiple sections of glazing.</p> <p>Flushglaze rooflights are designed to provide maximum daylight with minimal visible internal structure.</p>
Features:	<p>No visible fixings. Achieved using a Glazing Vision design clip-on detail which covers over structural fixings to leave a completely flush external finish. <i>(Excludes internal and round variants).</i></p> <p>Increased strength for bonded frames through additional and improved cleating. <i>(Excludes internal and round variants).</i></p> <p>Technical product catalogue of data including; sales drawings, schedule and manufacturing information.</p> <p>Kerb top trim extrusion available to mask the structure of the kerb top from external visibility. This is an optional extra. <i>(Excludes internal and round variants).</i></p>
Standard Glass Specification:	<p>Outer: 25.5-39mm Clear heat soak tested toughened laminate Spacer: 14mm Black silicone-sealed argon-filled cavity Inner: 6mm Clear heat soak tested soft low E toughened</p> <p>Design loadings for standard glass specification: Uniform load = 1.5kN/m² Concentrated load = 2.0kN</p>

Properties for standard glass specification:

Centre pane U-value = 1.1W/m²K Shading Coefficient = 0.56
Light Transmittance = 70.0% Mass = 67 Kg/m²
Light Reflectance = 10.0%

Standard Colour:	RAL 7015 slate grey
Rooflight Control:	N/A
Power Supply:	N/A
Drive Mechanism:	N/A
Thermally Broken:	Dual-density rubber foam seal on internal of kerb mount detail and external insulated flashing on wall abutment detail. <i>(Excludes internal and round variants)</i>
Thermal Performance (U-Value):	U _w = 1.51 W/m ² K (1200mm x 1200mm Overall Kerb Dimension) U _d = 1.31 W/m ² K (1200mm x 1200mm Overall Kerb Dimension)
Seals:	Combination of silicone, polybutyl and rubber seals.
Security:	Secured to kerb with structural fixings and polybutyl adhesive.
Kerb Dimensions:	Min Height = 150mm Min Thickness = 75mm Min Span = 450mm Min Width = 400mm Min Pitch = 1° (Recommended = 1°)
	Max Span = 4200mm Max Width = 4200*mm Max Pitch = 3° Max Kerb Area = 3.0m ² *

**For multipart, this is per section*

NOTE: MAXIMUM SPAN/WIDTH ARE INTERDEPENDENT. CHECK WITH SALES TEAM TO CONFIRM SIZES.

Use for Access: N/A

Sales Drawings:	<u>Drawing Number</u>	<u>Description</u>
	402-ASS-003	Walk-On Flushglaze cross section
	402-ASS-008	Walk-On Flushglaze with wall abutment
	402-ASS-016	Walk-On Flushglaze multi-part
	402-ASS-048	Walk-On Flushglaze EPDM cross section
	402-ASS-050	Internal Walk-on Flushglaze
	402-ASS-053	Circular Walk-on Flushglaze kerb detail

Optional Extras

Remote Control:	N/A		
Rain Sensor:	N/A	Rain Sensor Overrides:	
		Internal mounted Isolator Switch:	N/A
		Frame mounted Push Button:	N/A
		External mounted Key Switch:	N/A
		External mounted Digital Keypad:	N/A
Solenoid Bolt:	N/A	Dual Colour:	YES (Multipart)
Thermostat:	N/A	Special Colour:	YES
BMS Integration:	N/A	Ritec Coating:	YES
Trickle Vents:	NO	Downlighter:	NO
Wall Abutted:	YES	Multi-Part	YES
Round:	YES (But external fixings will be visible)	Multi-Part with Glass Fins	NO