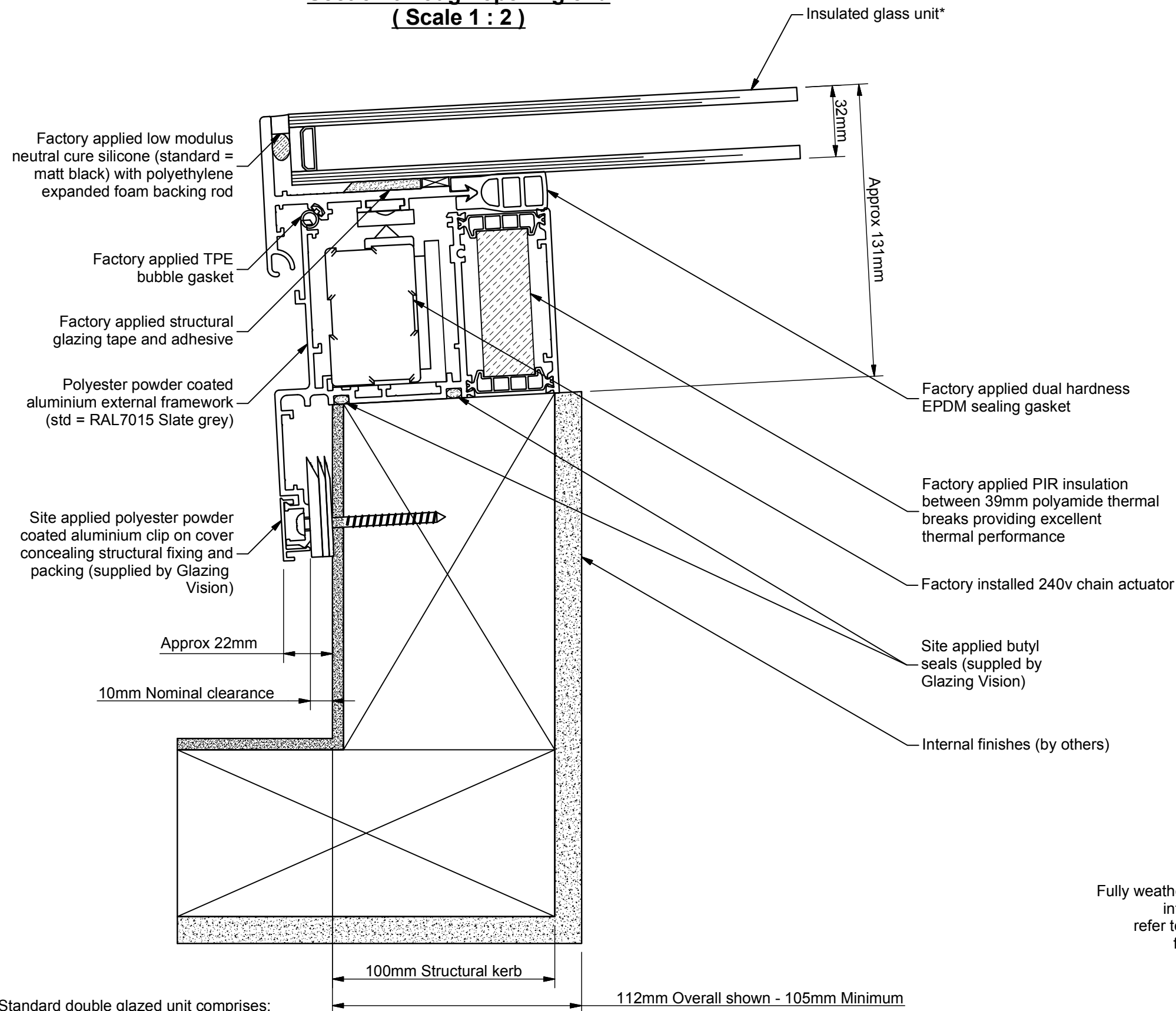
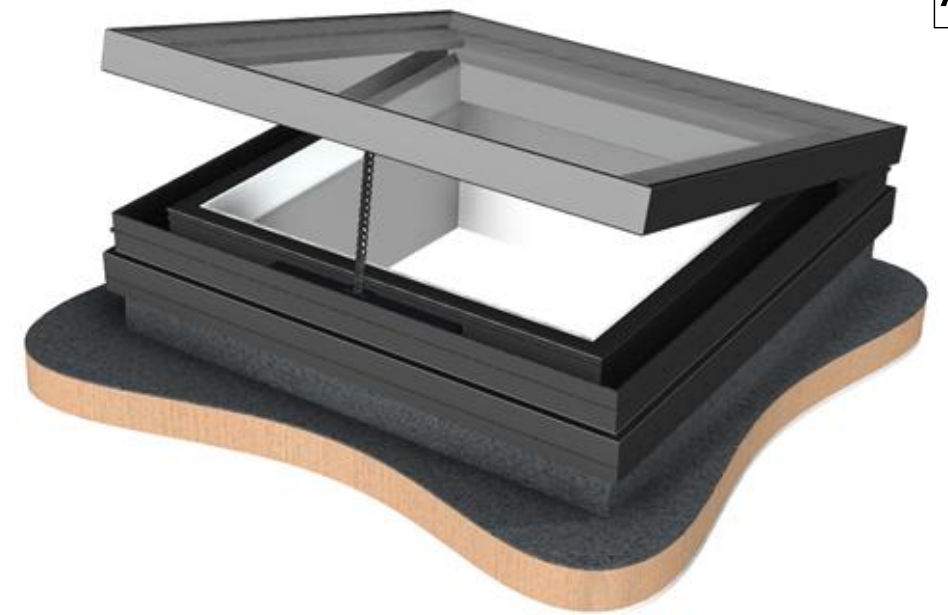


**Section through opening end
(Scale 1 : 2)**

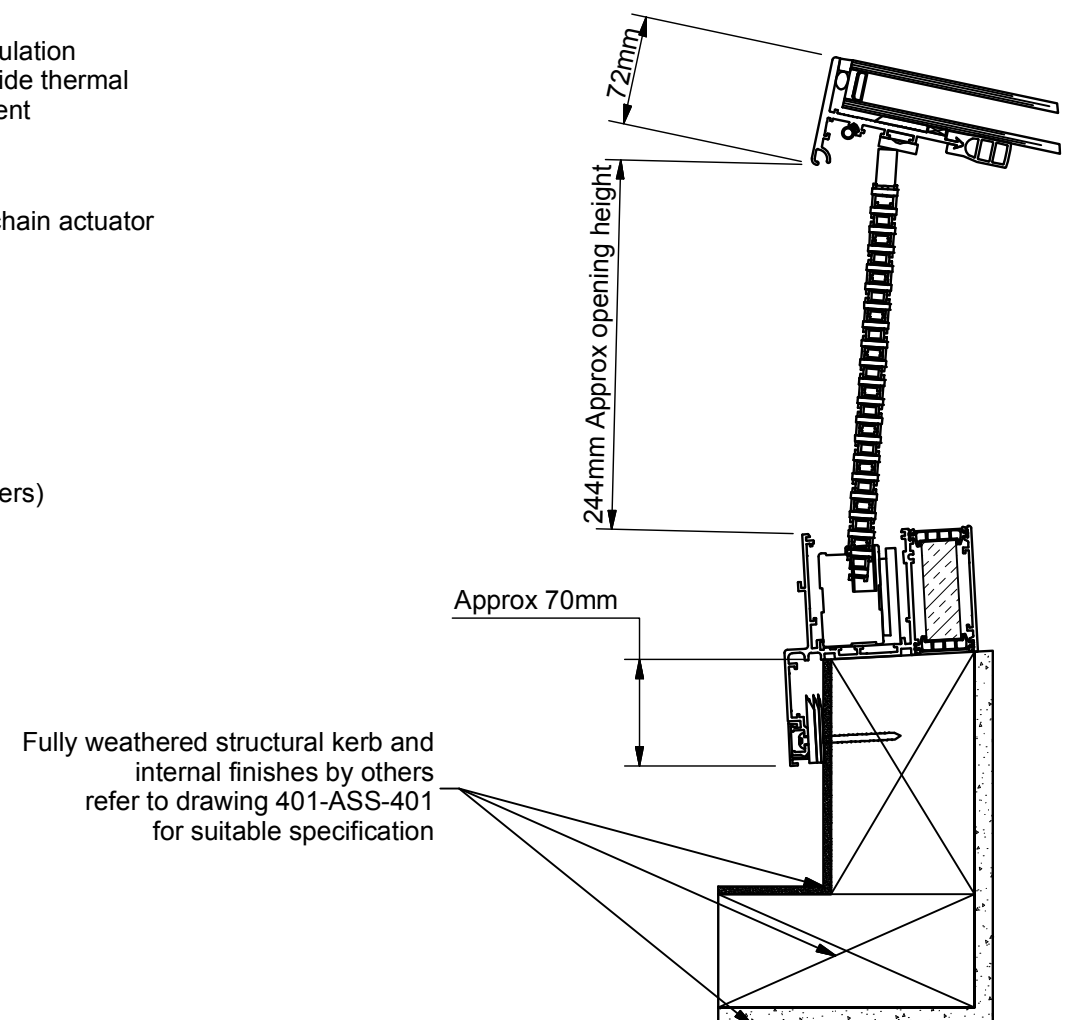


*Standard double glazed unit comprises:
6mm HST Clear toughened outer
20mm Argon filled black silicone sealed cavity with warm edge spacer
6mm HST Clear toughened soft coat low E

Design Patented: GB2514119



**Section through opening end
open position (Scale 1 : 5)**



<div><div>GLAZING VISION</div><div>Saw Mills Road Diss Norfolk IP22 4RG</div><div>Tel: +44 (0)333 8000 881 Fax: +44 (0)333 8000 882 Email: sales@glazingvision.co.uk Website: www.glazingvision.co.uk</div></div>	IT IS GLAZING VISION'S POLICY TO CONTINUOUSLY DEVELOP AND IMPROVE OUR PRODUCTS. WE THEREFORE RESERVE THE RIGHT TO MODIFY OR CHANGE THE DETAIL DESIGN AT OUR DISCRETION AND WITHOUT PRIOR NOTICE. THIS DRAWING IS COPYRIGHT AND THE SOLE PROPERTY OF GLAZING VISION LTD. THE DESIGNS/INFORMATION IT CONTAINS ARE PRIVATE AND CONFIDENTIAL. IT MUST NOT BE COPIED, EXHIBITED OR COMMUNICATED TO THIRD PARTIES FOR ANY PURPOSE OTHER THAN THAT FOR WHICH IT WAS ISSUED WITHOUT THE WRITTEN PERMISSION OF GLAZING VISION LTD.			Third angle projection unless otherwise noted. Tolerances: Whole numbers = ±1mm One decimal place = ±0.5mm Two decimal places = ±0.2mm All angles 90±0.5 degrees unless specified IF IN DOUBT - ASK! DO NOT SCALE Supplier to deburr & remove sharp corners			Rev	Revision Description		Drawn/Date	Product: 401 - GV Standard VisionVent Description: Chain actuated vent		Checked By: JWL	
							B	Patent no. added		JSL 10.10.16			Check Date: 10.10.16	
							A	Amended butyl and site fixing leaders		JamesB 24.06.14	Materials: N/A			
											Finish: Std=RAL7015 / RAL9010		Drawn By: JamesB	
											Weight: N/A		Drawn Date: 17.01.14	
									Quantity: N/A		Drawing No: 401-ASS-413			
									Scale: As above					